

# DESCRIBING THE LUXURIOUS AND FASHIONABLE AESTHETICS

## 淡写奢华时尚美学

Location / Taoyuan, Taiwan

项目地点 / 台湾桃园

Area / 215 m<sup>2</sup>

项目面积 / 215平方米

Photographer / Gimin Wu

摄影师 / 吴启民

Designers / JOHN, DARREN, BOB

设计师 / 蒋学正

Design Company / CHIANG YI INTERNATIONAL INTERIOR DESIGN COMPANY LIMITED

设计公司 / 讲译国际室内设计有限公司

Main Materials / imported marble, dyed veneer, laser engraving steel, special wallpaper, glass, mirror, cold stoving varnish, piano stoving varnish, etc.

主要材料 / 进口大理石、木皮染色、雷射雕刻板、特殊壁纸、玻璃、镜面、冷烤漆、钢琴烤漆等



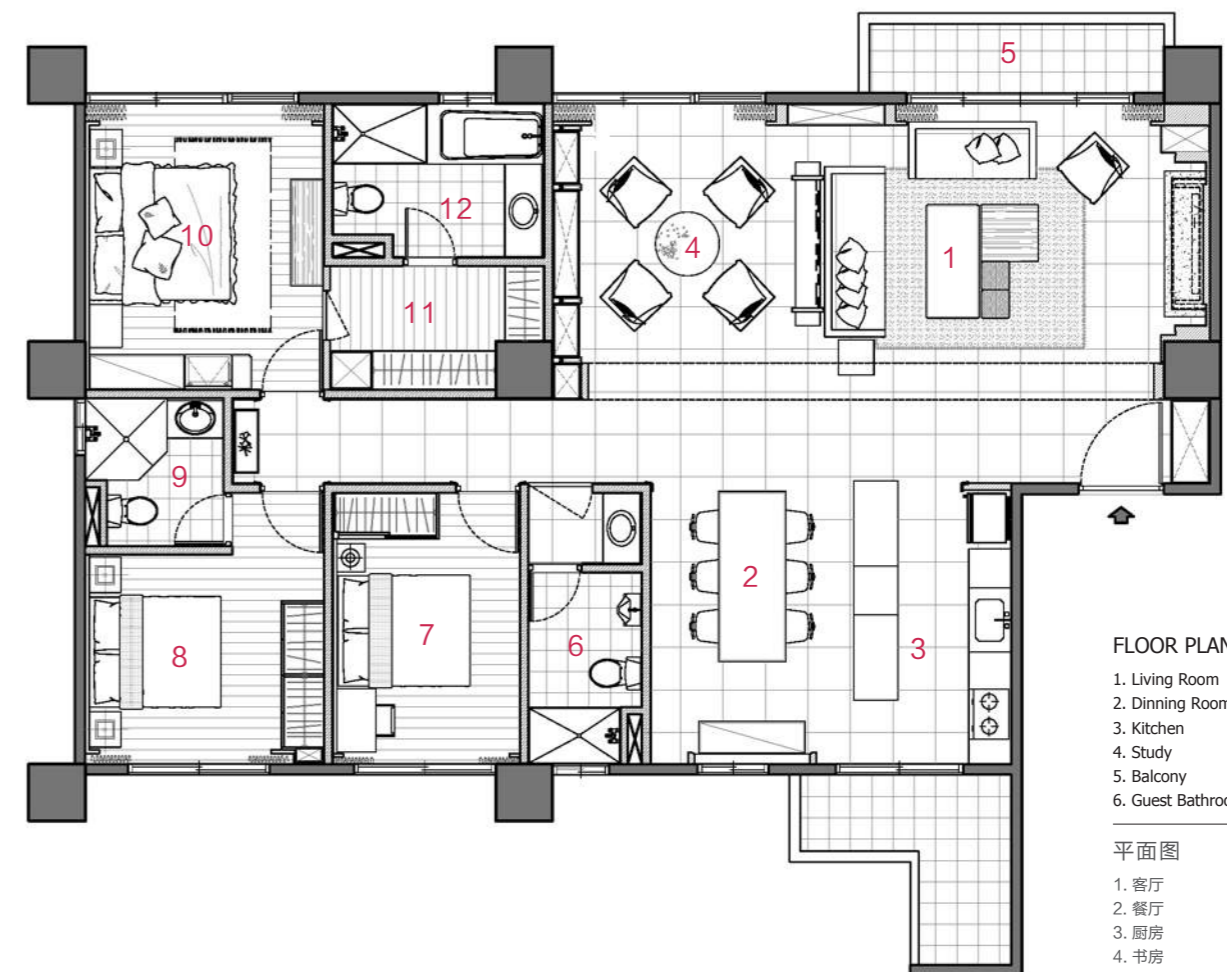
### DESIGN CONCEPT | 设计理念

This case is a mansion in New York Uptown with romance and luxury yet not lack of feelings of life. While how to get the balance of decoration and comfort in modern style and classical American style tests the designer's profound aesthetic accomplishment. Chiang Yi International Interior Design uses simple and neat expressions on the modeling as well as

本案是既浪漫奢华又不失生活感受的纽约上城豪邸，在当代与美式经典的并陈中，如何取得装饰与舒适的平衡，考验着设计者深厚的美学素养。讲译国际室内设计在造型表现上简洁干练，利用带来视觉安定效果的对称造型

the symmetrical technique to bring the stable visual effect, outlining the tranquil atmosphere in the mansion exquisitely like a painting. The interior is dominated by neat and restrained design in order to add the restrained humane feelings.

手法，将豪邸如画作般的宁静氛围细腻勾勒。室内以当代利落内敛设计力度为主，增添内敛的人文感受。



### FLOOR PLAN

- |                   |                     |
|-------------------|---------------------|
| 1. Living Room    | 7. Small Bedroom    |
| 2. Dining Room    | 8. Bedroom          |
| 3. Kitchen        | 9. Second Bathroom  |
| 4. Study          | 10. Master Bedroom  |
| 5. Balcony        | 11. Cloak Room      |
| 6. Guest Bathroom | 12. Master Bathroom |

### 平面图

- |       |         |
|-------|---------|
| 1. 客厅 | 7. 小卧室  |
| 2. 餐厅 | 8. 卧室   |
| 3. 厨房 | 9. 次浴   |
| 4. 书房 | 10. 主卧室 |
| 5. 阳台 | 11. 衣帽间 |
| 6. 客浴 | 12. 主浴  |





#### NATURAL COLORS | 自然色彩

The fireplace modeling built by wood dyeing and marble table-board shows the classic elements of American mansions, with the restrained and classical dark brown color to enhance the warmth, becoming the main scenery in the living room. The gray marble echoes with the white joint short wall with mountain stone, while modern furniture in dark tone is the restrained expression, endowing a tranquil and gentle atmosphere in the space. The restraint and stability created by the gray line boards bring the curtains into the basis of the setting, while the using of fabric and Roman curtains makes the atmosphere in parents room more mild and elegant.



木皮染色与大理石台面构筑的壁炉造型，展现了美式豪宅的经典元素，以内敛、经典的深咖啡色提升居住暖度，成为客厅区的视线主景。灰色大理石对应白色山型石的拼接矮墙，深色调现代家私的内敛表现，赋予空间宁静温和的氛围基础。灰色线板创造的内敛安定，将窗帘软件纳入风格布景的基础，而布幔与罗马帘的双层运用，使长亲房的氛围更为柔静典雅。





#### SPACE PLANNING | 空间规划

The bright sunlight comes first after entering which embellishes the classical American tone of black, gray and white; the elegant and comfortable manner creates a tranquil living area with the sense of a luxurious mansion. The half-transparent tawny glass with the technique of grilles and double-deck stack brings a fashion and transparent sense with rich modeling in the elegance. The symmetrical and stable visual feelings and the exquisite stacks of the line boards present a classical aesthetic taste; the arch of the TV wall frames the scenery in the living room and the study with a long distance, which also leads the start and end of the gallery. The open layout makes the visual depth of field and lights in the space extend and connect with each other.

入门后，迎面而来的灿烂日光，托衬美式经典的黑灰白基调，经典雅致的舒适气度，营造豪宅感的宁静生活。疏密宽幅随意的半透明茶玻，以格栅的手法取代隔屏，错次的双层堆栈，于典雅中带出富有造型的时尚通透感。对称安定的视觉感受，以及线板细腻的堆栈，谱写着经典的美学品味，电视墙侧的拱框，大跨距地框画客厅书房景致，同时引导铺排廊道的起始与收尾端景。开放式的格局设定，使空间视觉景深与光线得以延续串接。

